

Israel's War Crimes in Lebanon

The Lebanese Center for Human Rights documented Israeli attacks on medical and humanitarian teams in Lebanon between 23/9/2024, and 23/10/2024, which included **potential breaches of protections** mandated by International Humanitarian Law (IHL), particularly under **the 1949 Geneva Conventions**.

According to the data collected by CLDH more than:



**7 Ambulances
were hit**



**84 medical
personnel killed**



**13 medical
personnel injured**



**27 civil defense
members killed**



**15 attacks on hospitals and
medical facilities**



**4 attacks on
UNIFIL positions**

**Attacks on UN staff and facilities
contravene the 1994 Convention on the
Safety of United Nations Personnel.**

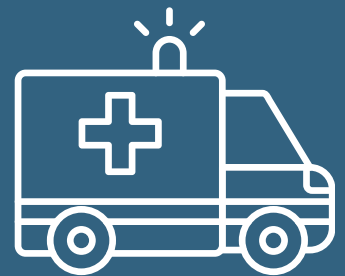




The continuous targeting of hospitals during this timeframe indicates an Israeli intentional denial of hospitals' protected status, raising the probability of intentional attacks.

Attacks on Ambulances and other medical transportation units **violate both Articles 12 and 15 of Protocol I**. These attacks are a **serious infringement** since these vehicles are clearly marked medical vehicles.

The timing of the attacks indicates a violation of the standards of proportionality and precaution.



RECOMMENDATIONS

- **Establishing** an international investigation mechanism into Israel's systematic targeting of humanitarian workers and medical workers in Lebanon.
- **Holding** Israel accountable before the International Criminal Court for the human rights violations against medical teams and humanitarian personnel committed in Lebanon.
- **Ensuring** the protection of medical teams, ambulances, hospitals, medical facilities, and humanitarian workers in Lebanon, by advocating for adherence to international humanitarian law.
- **Submitting** a case to the International Court of Justice (ICJ) by the Lebanese Government.
- **Submitting** a formal declaration by the Lebanese government under Article 12(3) of the Rome Statute or **seeking** referral through the UN Security Council